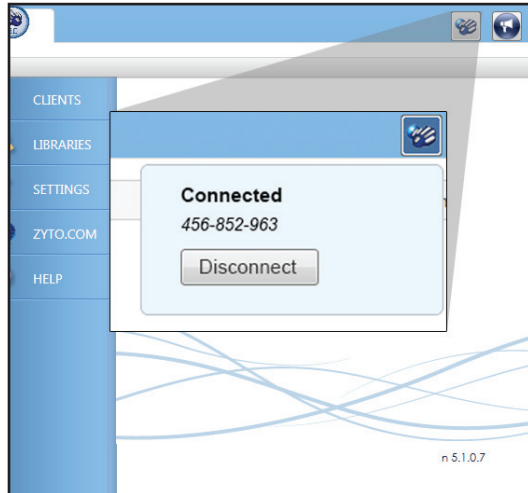


# ZYTO Remote

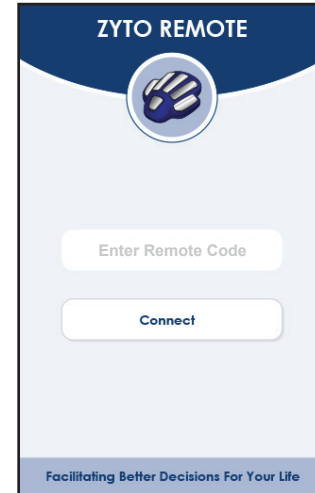
Quick start guide to a successful Remote session.

## Practitioner



Practitioner software

## Client



Client App

- 1** Open and log in to your ZYTO 5.0 software.
- 2** Click the **Remote** icon located in the upper right corner of your software, then click **Connect**.
- 3** Share the remote code with your client.
- 4** Once your client has connected, open or create a new client record. Continue a session as usual.
- 5** When the session is finished, click the **Remote** icon once again and click **Disconnect**.

- 1** Go to [zyto.com/remote](http://zyto.com/remote) to download and install the ZYTO Remote App. *Note: Hand Cradle drivers will be installed during this process.*
- 2** Plug your ZYTO Hand Cradle into your computer.
- 3** Double click the ZYTO Remote App on your desktop.
- 4** Enter the remote code you receive from your practitioner and click **Connect**.
- 5** Place your hand on the Hand Cradle and wait for your practitioner to begin a scan.

ZYTO™