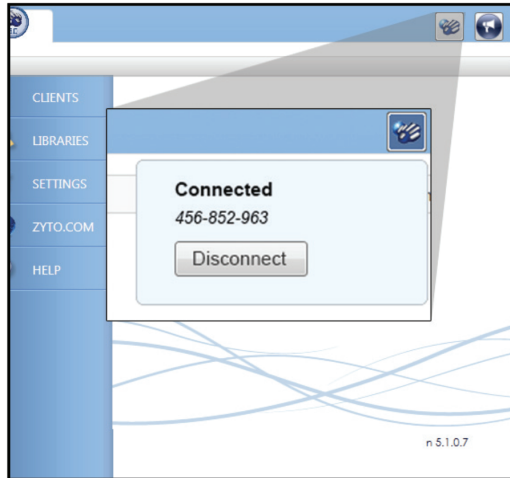


# ZYTO Remote

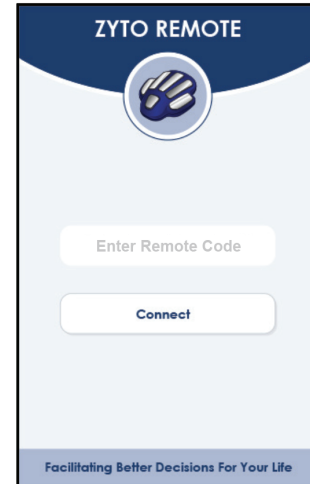
Quick start guide to a successful Remote session

## Practitioner



Practitioner software

## Client



Client App

- 1 Open and log in to your ZYTO 5.0 software.
- 2 Click the **Remote** icon located in the upper right corner of your software, then click **Connect**.
- 3 Share the remote code with your client.
- 4 Once your client has connected, open or create a new client record. Continue a session as usual.
- 5 When the session is finished, click the **Remote** icon once again and click **Disconnect**.

- 1 Go to [ZYTO.com/remoteapp](http://ZYTO.com/remoteapp) and click the download button. After downloading, open the file. Then click **Install**. *Note: Hand Cradle drivers will be installed during this process.*
- 2 Plug your ZYTO Hand Cradle into your computer.
- 3 Double click the ZYTO Remote App on your desktop.
- 4 Enter the remote code you receive from your practitioner and click **Connect**.
- 5 Place your hand on the Hand Cradle and wait for your practitioner to begin a scan.